

## *Advantage*<sup>TM</sup> 4400 Series Harnesses

The 4400 Series Advantage harnesses are lightweight for all day comfort. These ergonomically designed full-body harnesses feature quick connect leg buckles and color coded shoulder and thigh straps for easy donning. The standard back D-Ring is adjustable for the best fit maximum comfort. Made from durable chemical resistant polyester webbing for long life and easy maintenance. Convenient inspection grid on the label helps with compliance issues and makes record keeping easy.

- Adjustable back D-Ring
- Chemical resistant polyester webbing
- Convenient inspection grid on label
- Separate serial number for each harness for tracking and record keeping
- Color coded shoulder and thigh straps
- Quick-connect buckles on leg straps
- Multiple adjustment points for best fit
- No tangle pad, has loop in webbing for tool belt and attractive yellow webbing
- Available in cross-over or traditional vest style
- Available with adjustable front D-Ring on non-slide pad
- Safe T-Fold stress indicator alerts the user when the harness has been stressed
- Meets OSHA 1926.500 subpart M, 1910.66 appendix C, ANSI A10.14 and Z359.1 standards



4431-PC2



4431-PC2WA



4433-X02



4433-FD2WA



Back D-Ring



4435-PT2

## Advantage Harnesses

All harnesses on this page meet OSHA 1926.500 subpart M, 1910.66 appendix C, ANSI A10.14 and Z359.1 standards

### Advantage II Harnesses

4400 Series Harnesses  
*Polyester Webbing*

4400-BA1	Lightweight QA Vest Harness
4400-BA1CKT	Lightweight QA Vest Harness with 3254 Lanyard Kit
4400-BA1EXP	Lightweight QA Vest Harness with Shock Absorbing Lanyard
4400-BA1WA	Lightweight Quick Attach Harness with Work Positioning D-Rings
4400-PT2	Lightweight Vest Style Harness with Tongue Buckle & Back D-Ring
4400-PT2CKT	Lightweight Tongue Buckle Harness with 3254 Lanyard Kit
4400-PT2XP	Lightweight Tongue Buckle Harness with 3254 Lanyard Attached
4400-PT2WA	Lightweight Tongue Buckle Harness with work Positioning D-Rings
4400-PTP20	Lightweight Tongue Buckle Harness with 2' D-Ring Extender

### Advantage II Harnesses

4430 Series Harnesses  
*1.75" Polyester Webbing / 2" Zinc forged steel D-Ring*

4431-6KT	S.A. Quick Connections Harness with 3252 Lanyard Attached
4431-PC2	S.A. Quick Connect vest Harness
4431-PC2EXP	4431-PXC2 Harness with Integral 3252-P6HH
4431-PC2WA	S.A. QA Harness w/ Work Positioning D-Rings
4431-PC2WAD	S.A. Quick Connect Harness w/ Work Positioning & Rescue D-Rings
4433-FD2	S.A. front D-Ring Harness
4433-FD2WA	S.A. front D-Ring Harness with Work Positioning D-Rings
4433-XO2	S.A. Cross Over Harness
4433-XO2WA	S.A. Cross Over Harness with Work Positioning D-Rings
4435-6KT	S.A. Tongue Buckle Vest Style Harness
4435-FRDWA	S.A. Tongue Buckle Harness with Front D-Ring & WP
4435-PT2	S.A. Tongue Buckle Vest Style Harness
4435-PT2EXP	4435-PT2 with integral 3252-P6HH
4435-PT2WA	S.A. Tongue Buckle Vest Style Harness with Work Positioning D-Rings

### Accessories

*Polyester Webbing*

8250-LS1	Lanyard Sto for use w/ harnesses
7400-PKT	Lanyard Tote Bag

## 7430 Series LSF Harness

The Full-feature Full-Body Harness

The 7430 Series is a lightweight and easy-to-use line of full-body harnesses. These ergonomically designed harnesses feature RTC's unique Safe-T-Fold stress indicator which alerts the user when the harness has been stressed and should be removed from service. The back D-Ring helps reduce the chance of head injury a fall by maintaining the body's upright position. Shoulder and thigh straps are easily differentiated by distinctive color coding. Quick-connect leg straps make donning quick and easy.

- Flexible D-Ring pad for ultimate comfort
- Quick and easy to put on
- Adjustable back D-Ring
- Heavy-duty hardware for superior strength
- Chemical resistant polyester webbing
- Safe-T-Fold stress indicator alerts the user when the harness has been stressed
- Quick-connect leg straps for one time fitting and fast donning
- Available in XS - XL sizes
- Weighs only 3 lb.
- Convenient inspection date grid on harness
- Separate serial number for each harness for tracking and record keeping
- Meets OSHA 1910.66, 1926.500, ANSI A10.14 and Z359.1 standards
- See facing page for complete list of available products



7430-PQ2



7430-PQ2EXP



7430-PQ2CL



7430-PQD



Safe-T-Fold  
Stress Indicator



7430-PQ2W

## 7430 Series LSF Harnesses

All harnesses on this page meet OSHA 1926.500 subpart M, 1910.66 appendix C, ANSI A10.14 and Z359.1 standards

### LSF Harnesses

#### 7430 Series Vest Style

*Full Body LSF Harness w/ Quick-connect Leg Straps*

*1.75" Polyester Webbing / 2" Zinc-plated forged steel D-Ring*

7430-PQ2	Back D-Ring
7430-PQ2CL	Back D-Ring w/ 1 Left Side Climbing D-Ring For RTC Ladder Climbing Systems
7430-PQ2E	Back D-Ring - Extra Large
7430-PQ2EXP	Back D-Ring w/ 6' Expander Lanyard (#8252) attached
7430-PQ2S	Back D-Ring - Extra Small
7430-PQ2SW	Back D-Ring w/ Work Positioning Belt - Small
7430-PQ2W	Back D-Ring w/ Work Positioning Belt
7430-PQD	Back D-Ring & 2 Shoulder D-Rings
7430-PQDXL	Back D-Ring & 2 Shoulder D-Rings - XL

### Accessories

*Polyester Webbing*

8250-LS1	Lanyard Sto for use w/ harnesses
7400-PKT	Lanyard Tote Bag

## 7431 Series CMH Harness

### The Quick Attach Harness

The 7431 Series line of full-body harnesses are used extensively throughout the construction, utility and rescue industries. These lightweight, durable harnesses provide comfortable suspension and ergonomic design. RTC's unique Safe-T-Fold stress indicator alerts the user when the harness has been stressed and should be removed from service. The back D-Ring helps reduce the chance of head injury during a fall by maintaining the body's upright position. Shoulder and thigh straps are easily differentiated by distinctive color coding.

- Safe-T-Fold stress indicator alerts the user when the harness has been stressed
- Chemical resistant polyester webbing
- Lightweight, only 2 lb.
- Ideal for the individual user
- Quick and easy to put on
- Convenient inspection date grid on label
- Work-positioning models available
- Available with webbing loop D-Ring
- Available with 2 ft. D-Ring extension
- Available with integral 6 ft. lanyard
- Meets OSHA 1910.66, 1926.500, ANSI A10.14 and Z359.1 standards
- See facing page for complete list of available products



## 7431 Series CMH Harnesses

All harnesses on this page meet OSHA 1926.500 subpart M, 1910.66 appendix C, ANSI A10.14 and Z359.1 standards

### CMH Harnesses

7431 Series Vest Style

Full Body CMH Harness w/ Quick-connect Leg Straps

*1.75" Polyester Webbing / 2" Zinc-plated forged steel D-Ring*

7431-PC2

Back D-Ring

7431-PC2EXP

Back D-Ring w/ 6' Expander Lanyard (#8252) Attached

7431-PC2LC

Quick Connect Harness w/ protective Sleeves & Web D-Ring

7431-PC2P20

Back D-Ring w/ 2' Extension

7431-PC2W

Back D-Ring & Work Positioning Belt w/ 2 Side D-Ring

7431-PC2WA

Back D-Ring & Work Positioning Side D-Ring

7431-PC2Y

Back D-Ring w/ 8252 Y-Lanyard

### Web Back D-Ring Harnesses

7431 Series Vest Style

Full Body CMH Harness w/ Quick-connect Leg Straps

*1.75" Polyester Webbing*

7431-PC2L

Web Back D-Ring

### Accessories

*Polyester Webbing*

8250-LS1

Lanyard Sto for use w/ harnesses

7400-PKT

Lanyard Tote Bag

## 7432 Series Utility Harness

### Full Body Utility Harness

The 7432 Series Utility Harness is a lightweight and easy-to-use full-body harness engineered for use near electrical hazards. It is easy to put on and extremely comfortable. All buckles are specially coated and backed by leather pads. These ergonomically designed harnesses feature RTC's unique Safe-T-Fold stress indicator which alerts the user when the harness has been stressed and should be removed from service. Made of durable and chemical resistant polyester web for long life and easy maintenance.

#### Materials

*Webbing:* 1.75" polyester having a minimum break strength exceeding the OSHA standard of 5000 lbs.

*Buckles:* Coated quick attach matting buckles

*D-Ring:* Polyester loop

*Weight:* 2 1/4 lbs.

#### Available Models:

7432-PC2: Utility Harness w/ back D-Ring and front rescue loops

7432-PC2TB: Utility Harness w/ back D-Ring front rescue loops and adjustable tool belt loops

- Polyester loop with wear protection sleeve replaces traditional metal D-Ring
- Adjustable back D-Ring loop
- Quick and easy to put on
- Flexible D-Ring pad for comfort
- Made of chemical resistant polyester web
- Abrasion resistant powder coated buckles backed by leather pads
- Features unique Safe-T-Fold stress indicator
- Convenient inspection date grid on harness
- Available with adjustable tool belt loops (7432-PC2TB)
- Front Rescue Loops
- Separate serial number for each harness for tracking and record keeping
- Meets OSHA 1910.66 1926.500, ANSI A10.14 and Z359.1 standards

*Quick-connect coated buckles backed by leather pads*

*Non-metal Rescue Loops*

*Polyester Loop D-Ring*



*Safe-T-Fold Stress Indicator*



*Adjustable Tool Belt Loops*



## 7432 Utility Harnesses

All harnesses on this page meet OSHA 1926.500 subpart M, 1910.66 appendix C, ANSI A10.14 and Z359.1 standards

### Utility Harnesses

7432 Series Full body Utility Harness

Full Body CMH Harness w/ Quick-connect Leg Straps

*Coated Buckles w/ Leather Backing & Quick Connect Chest & Leg Straps*

*Polyester Webbing / web D-Ring with Abrasion Resistant Sleeve / 2 rescue loops*

7432-PC2

Back Loop D-Ring

7432-PC2TB

Loop D-Ring with Adjustable Tool Belt Loops

### Accessories

*Polyester Webbing*

8250-LS1

Lanyard Sto for use w/ harnesses

7400-PKT

Lanyard Tote Bag



### 7435 Series LSF Harness

#### The Full-Feature Full-Body Harness

The 7435 Series is a lightweight and easy to use line of full-body harnesses. These ergonomically designed harnesses feature RTC's unique Safe-T-Fold stress indicator which alerts the user when the harness has been stressed and should be removed from service. The back D-Ring helps reduce the chance of head injury during a fall by maintaining the body's upright position. Shoulder and thigh straps are easily differentiated by distinctive color coding.

- Flexible D-Ring pad for comfort
- Quick and easy to put on
- Adjustable back D-Ring
- Heavy-duty hardware for superior strength
- Chemical resistant polyester webbing
- Safe-T-Fold stress indicator alerts the user when the harness has been stressed
- Ideal for use by several workers (tongue buckles make adjustment quick and easy)
- Available in XS - XL sizes
- Weighs only 3 lbs.
- Convenient inspection date grid on harness  
Special models available for 310 lbs. - 410 lbs. Users (7435-PT2E410)
- Separate serial number for each harness for tracking and record keeping
- Meets OSHA 1910.66, 1926.500, ANSI A10.14 and Z359.1 standards



7435-PT2



7435-PT2W



7435-PTD



7435-PT2EXP



7435-PTP20



Safe-T-Fold  
Stress Indicator

## 7435 Series LSF Harnesses

All harnesses on this page meet OSHA 1926.500 subpart M, 1910.66 appendix C, ANSI A10.14 and Z359.1 standards

### LSF Harnesses

7435 Series Vest Style

Full Body LSF Harness w/ Tongue Buckle Leg Straps

*1.7" Polyester Webbing / 2" Zinc -plated forged steel D-Ring*

7435-PT2	Back D-Ring
7435-PT2CL	Back D-Ring w/ 1 Left Side Climbing D-Ring (for use w/ RTC ladder climbing systems)
7435-PT2E	Back D-Ring - Extra Large up to 310 lbs.
7435-PT2ET	XI Tongue Buckle Harness w/ Tongue Buckle Chest Strap
7435-PT2EW	Back D-Ring - Extra Large w/ Work Positioning Belt
7435-PT2EWA	XI Tongue Buckle Harness w/ Work Positioning D-Rings
7435-PT2EXP	Back D-ring w/ 6' Expander Lanyard (#8252) attached
7435-PT2EXPRH	XI Tongue Buckle Harness
7435-PT2S	Back D-Ring - Extra Small
7435-PT2SW	Back D-Ring - Extra Small w/ Work Positioning Belt
7435-PT2T	Tongue Buckle Harness w/ Tongue Buckle Chest Strap
7435-PT2W	Back D-Ring & Work Positioning Strap w/ 2 side D-Rings
7435-PT2WA	Tongue Buckle Harness w/ Positioning D-Rings
7435-PT2Y	Back D-Ring w/ 8252 Y-Lanyard
7435-PTD	Back D-Ring & 2 Shoulder D-Rings
7435-PTP20	Back D-Ring w/ 2' Lanyard & O-ring
7435-6EXPNOB	Tongue Buckle Harness w/ 6' Expander Lanyard with no D-Ring

### Advantage II Harnesses

4430 Series Harnesses

*1.75" Polyester Webbing / 2" Zinc forged steel D-Ring*

7435-E410	Extra Large up to 410 lbs. W/ 8250 lanyard attached
7435-E410RWA	Extra Large Work Positioning Harness w/ Rebar Hooks
7435-E410Y	Extra Large Harness w/ 8250 Y-Lanyard Attached
7435-E410YCK	Extra Large Harness w/ 8250 Y-Choker Lanyard
7435-E410YD	410 lbs. Harness w/ Y-Lanyard & Rescue Shoulder D-Rings
7435-E410YRWA	Extra Large work Positioning Harness w/ Y-Rebar Lanyard
7435-E410YWA	Extra Large Work Positioning Harness w/ Y-Lanyard Plus Work Positioning D-Rings

### Accessories

*Polyester Webbing*

8250-LS1	Lanyard Sto for use w/ harnesses
7400-PKT	Lanyard Tote Bag

## 7436 & 7437 Series Harnesses

### The Front D-Ring Harness

The 7436 & 7437 Series harnesses are lightweight and easy to use full-body harnesses. The front D-Ring is ideal for ladder climbing applications (see inset photo below), rescue or controlled descent. The standard back D-Ring can be used for traditional fall arrest. These ergonomically designed harnesses feature RTC's Safe-T-Fold stress indicator, which alerts the user when the harness has been stressed and should be removed from service. Multiple adjustment points allow shoulder straps and front D-Ring to be adjusted independently.

- Four adjustment points for ultimate fitting and maximum comfort
- Adjustable height front D-Ring
- Adjustable back D-Ring
- Chemical resistant polyester webbing
- Available in XS-XL sizes
- Safe-T-Fold stress indicator alerts user when harness has been stressed
- Flexible back D-Ring pad for ultimate comfort
- Separate serial number for each harness for tracking and record keeping
- Meets OSHA 1910.66, 1926.500, ANSI A10.14 and Z359.1 standards



*Front D-Ring shown in uses with RTC Climb-Rite*



*Safe-T-Fold Stress Indicator*



## 7436 & 7437 Series Harnesses

All harnesses on this page meet OSHA 1926.500 subpart M, 1910.66 appendix C, ANSI A10.14 and Z359.1 standards

### Front D-Ring Harnesses

*Adjustable Front D-Ring Harness*

7436-FD2	Front D-Ring w/ Quick Connect
7436-FD2E	Front D-Ring - Extra Large
7436-FD2EWA	Front D-Ring w/ Work Positioning D-Rings
7436-FD2EWAD	Front D-Ring w/ Work Positioning D-Rings & Shoulder D-Rings
7436-FD2S	Front D-Ring - Extra Small
7436-FD2WA	Front D-Ring w/ side D-Rings
7436-FD2WAD	Front D-Ring w/ Work Positioning Side D-Rings & Shoulder D-Rings
7437-FD2	Front D-Ring w/ Tongue Buckles
7437-FD2E	Front D-Ring - Extra Large w/ Tongue Buckles
7437-FD2S	Front D-Ring - Extra Small w/ Tongue Buckles
7437-FD2WA	Front D-Ring - w/ Work Positioning D-Rings w/ Tongue Buckles

### Accessories

*Polyester Webbing*

8250-LS1	Lanyard Sto for use w/ harnesses
7400-PKT	Lanyard Tote Bag

## PPE Garments & Accessories

Protective accessories for harness wearing workers

Beat the Heat with the RTC Hydrator. It holds 50 oz. Of refreshing liquids for those working hard off the ground. The only hydration system tested to meet all fall protection requirements. Exclusively designed by CamelBak to fit on RTC Fall Protection Harnesses! The Welder's Coat Series made of lightweight and flexible cotton twill is easily laundered and flame resistant. Less expensive than leather gear give you great protection and a comfortable fit. Our High Visibility PPE garments can be used over fall protection harnesses. Increase the visibility of employees working around moving motor vehicles, heavy equipment or other endangering elements, while allowing full access to standard fall protection equipment.



### Hydrator

- Big Bite Valve Just bite and sip. Made from 100% medical grade silicone
- Patented one-piece design is simple to use and clean
- Reservoir insulation closed-cell foam throughout keeps liquid cool or warm for hours
- Durable Exterior Tough, USA-made, 1000D, Safety Yellow

### Welder's Coat

- Durable treated flame resistant 100% 12oz. Cotton twill fabric
- Cotton fabric allows a cool, comfortable feel
- Flexible and lightweight
- Less than half the price of a leather coat
- Welder's protective lanyard sleeve also available
- Flame resistant treatment lasts up to 25 industrial launderings and 50 home launderings.

### Hi Vis PPE Vest

- Lightweight (1.6 lb) and breathable
- Available in five sizes for a comfortable fit, side adjust for a perfect fit
- Durable and home launderable
- Heavy duty construction
- Typical life cycle of 12 - 24 months with constant use
- All fabrics are third party tested for compliance to ANSI/ISEA 107-1999 standards
- Meets ANSI/ISEA 107-1999 class 2 standards (small size meets class 1)
- Made in the USA



Back Harness D-Ring Exit



Welder's Coat Series



Garment Model with Front Pockets



## Harnesses & Accessories

All harnesses on this page meet OSHA 1926.500 subpart M, 1910.66 appendix C, ANSI A10.14 and Z359.1 standards

### Class 2 PPE High Visibility Vest

*700 Series PPE Garment without pockets*

7000-VS	PPE Garment w/o Pockets, size Small
7000-VM	PPE Garment w/o Pockets, size Medium
7000-VL	PPE Garment w/o Pockets, size Large
7000-VXL	PPE Garment w/o Pockets, size Extra Large
7000-VXXL	PPE Garment w/o Pockets, size 2XL

### Class 2 PPE High Visibility Vest

*700 Series PPE Garment with pockets*

7001-VS	PPE Garment w/o Pockets, size Small
7001-VM	PPE Garment w/o Pockets, size Medium
7001-VL	PPE Garment w/o Pockets, size Large
7001-VXL	PPE Garment w/o Pockets, size Extra Large
7001-VXXL	PPE Garment w/o Pockets, size 2XL

### Welders Jacket for Safety Harness

*7002 Welder's Jacket Series*

7002-WCM	Medium Fire Retardant Cotton Welders Jacket for Safety Harness
7002-WCL	large Fire Retardant Cotton Welders Jacket for Safety Harness
7002-WCXL	X-Large Fire Retardant Cotton Welders Jacket for Safety Harness
7002-WCXXL	2X-Large Fire Retardant Cotton Welders Jacket for Safety Harness
7002-WCXXXL	3X-Large Fire Retardant Cotton Welders Jacket for Safety Harness

### Hydrator Hydration Pack

*Hydration Pack*

7000-HYPK	Hydration Pack for Full Body Safety Harness
-----------	---

### Accessories

7000-MAN	Foam Harness Display Mannequin
7400-PKT	Lanyard Tote Bag for Harness
7000-CLIP	Bite Valve Positioner Clip
7000-CLTABS	Cleaning Tablets 8-Pack

### Work Positioning Belts

*7000 Work Positioning Belts Series*

7000-BLTM	Medium Work Positioning Belt with Padded Lumbar Support
7000-BLTL	Large Work Positioning Belt with Padded Lumbar Support
7000-BLTXL	Extra-Large Work Positioning Belt with Padded Lumbar Support
7000-BLTXXL	2X - Extra Large Work Positioning Belt with Padded Lumbar Support
7000-BLTQC	Quick Connect Work Positioning Belt with Padded Lumbar Support

### *Advantage*<sup>TM</sup> 3252 & 3254 Series Harnesses

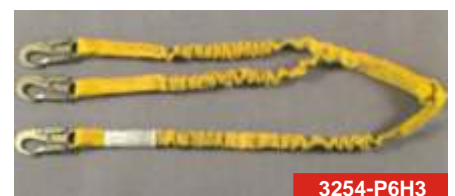
#### 3252 Series

- One-piece, flat, polyester webbing is resistant to chemicals
- Double locking snaphooks reduce the chance of roll-out or accidental disengagement from D-Ring
- Clear cover on shock absorber for complete inspection
- Separate serial number for each lanyard for tracking and record keeping
- Wear pads on metal snaphooks ensure long lasting strength
- Meets OSHA 1926.500 subpart M, 1910.66 appendix C, ANSI A10.14 and Z359.1 standards

#### 3254 Series

- Lightweight & Flexible
- Low arresting forces
- Double locking snaphooks proof tested to 3,600 lb.
- Yellow sleeve protects entire lanyard
- Separate serial number for each lanyard for tracking and record keeping
- Chemical-resistant polyester webbing
- Meets OSHA 1926.500 1910.66 and ANSI A10.14

The 3252 Series Advantage lanyard is a lightweight, flexible and economical connection between a RTC harness and an anchorage. These shock absorbing lanyards feature a deceleration distance of 42 inches or less. The 3252 Series Lanyards are available in multiple configurations including a Y-Lanyard that helps maintain continuous protection. The 3254 Series Advantage lanyard is a lightweight, flexible and economical connection between your harness and an anchorage. These durable, chemical resistant lanyards include an inner polyester core that stretches to reduce the arresting force in the event of a fall. The shock absorbing lanyard feature a deceleration of 42 inches or less. The 3254 series lanyards are available in multiple configurations including a Y-Lanyard that helps maintain continuous protection.



## Advantage Lanyards

All lanyards on this page meet OSHA 1926.500 subpart M, 1910.66 appendix C, ANSI A10.14 and Z359.1 standards

### Advantage Lanyards

3252 Series Shock Absorbing Lanyards  
*Polyester Webbing*

3252-P4HL3	4' Y-Lanyard w/ 2 Qty 9127 Ladder Hooks
3252-P4HRH	4' Lanyard with 1 Double Locking Snaphook & 1 Rebar Hook
3252-P6H3	6' Lanyard w/ 3 Double Locking Snaphooks
3252-P6HH	6' Lanyard w/ 2 Double Locking Snaphooks
3252-P6HR3	6' Y-Lanyard w/ Rebar Hooks
3252-P6HR3L	6' Y-Lanyard w/ Rebar Hook and Loop
3252-P6HRH	6' Y-Lanyard w/ 1 Double Locking Snapbook & 1 Rebar Hook

### Advantage Shock Absorbing Lanyards

3252 Series "Bungee Style/Stretch" - Shock Absorbing Lanyards  
*1" Polyester Webbing*

3252-P6H3B	6' Shock Absorbing Stretchable Y-Lanyard
3252-P6HHB	6' Shock Absorbing Stretchable Lanyard
3252-P6HR3B	Advantage Bungee w/ 2 Rebar Hooks & 1 Strap
3252-P6HRHB	6' Shock Absorbing Lanyard w/ Bungee & Rebar

### Advantage Lanyards

3252 Series "Bungee Style" - Shock Absorbing Lanyards  
*Polyester Webbing*

3254-P6H3	6' Lanyard w/ 3 Double Locking Snaphooks
3254-P6HH	6' Lanyard w/ 2 Double Locking Snaphooks
3254-P6HR3	6' Y-Lanyard w/ 2 Rebar Hooks
3254-P6HRH	6' Lanyard w/ 1 Double Locking Snaphook & Rebar Hook

### Accessories

8250-NOMX4	Universal Nomex Lanyard Cover for 4 ft. Lanyards
8250-NOMX6	Universal Nomex Lanyard Cover for 6 ft. Lanyards
8250-FRSLV6	6' Fire Retardant Lanyard Protective Sleeve



## 8250 Expander Lanyard

Shock Absorbing Lanyard You Can Visually Inspect

The 8250 Series Expander lanyard is one of the safest and most reliable lanyards ever developed. Used extensively throughout the construction and industrial markets, this durable, chemical resistant lanyard includes double locking snaphooks that reduce the chance of rollout or accidental disengagement. Every lanyard features a hidden stress tag which appears once a lanyard is stressed. Available in 4 foot and 6 foot lengths.

- Convenient inspection date grid on label
- Chemical resistant polyester webbing
- Maximum arresting forces of 900 lb.
- Flat polyester webbing with clear covering for easy inspection
- Double locking snaphooks proof tested to 3,600 lbs.
- Hidden stress indicator appears once the device has been stressed
- Separate serial number for each lanyard for tracking and record keeping
- Meet OSHA 1926.500 1910.66 and ANSI A10.14 and Z359.1 standards



Nomex Lanyard Cover



Double locking snaphooks



## 8250 Expander Lanyards

All lanyards on this page meet OSHA 1926.500 subpart M, 1910.66 appendix C, ANSI A10.14 and Z359.1 standards;  
Lanyards must be used with a full body harness

### 8250 Series

Shock Absorbing Expander Lanyards  
*Adjustable Front D-Ring Harness*

8250-P4HH	4' Lanyard w/ 2 Double Locking Snaphooks
8250-TRLAN	4' Training Lanyard w/ Loop Ends ( <i>Qualified Person Required</i> )
8250-P6H3	6' Y Lanyard w/ 3 Double Locking Snaphooks
8250-P6HH	6' Lanyard w/ 2 Double Locking Snaphooks
8250-P6HHA	6' Adjustable Lanyard w/ 2 Double Locking Snaphooks
8250-P6HLH	6' Lanyard w/ 1 Double Locking Snaphook & 1 #9127 ladder hook

### Accessories

8250-NOMX4	Universal Nomex lanyard cover 4 4 ft. lanyards
8250-NOMX6	Universal Nomex lanyard cover for 6 ft. Lanyards
8250-FRSLV6	6' Fire Retardant Lanyard Protective Sleeve

## 8252 Expander Lanyard

A Flexible, Compact, Shock Absorbing Lanyard

The 8252 Expander shock absorbing lanyard is one of our most flexible and compact lanyards. Every Expander lanyard features our double locking snaphooks. Each lanyard contains a hidden stress indicator that appears once the lanyard has been stressed. The clear cover over the shock absorber allows for easy inspection. A convenient inspection grid is provided on the label to assist with compliance issues and make record keeping easy. The 8252 Expander is available in 2-ft., 3-ft., 4-ft. And 6-ft. Lengths. The 8252 is constructed of chemical resistant polyester webbing.

- One-piece, flat, polyester webbing is resistant to chemicals
- Double locking snaphooks reduce the chance of roll-out or accidental disengagement from D-Ring
- Convenient inspection grid on label
- Clear cover on shock absorber for complete inspection
- Separate serial number for each lanyard for tracking and record keeping
- Available in 2-ft., 3-ft., 4-ft. and 6-ft. lengths
- Wear pads on metal snaphooks ensure long lasting strength
- Adjustable length models available to reduce free fall
- Tie back style lanyards available for easy attachment to anchorage
- Meets OSHA 1926.500 subpart M, 1910.66 appendix C, ANSI A10.14 and Z359.1 standards



8252-P6HHCK



8252-C6HH



8252-P6HHA



8252-P6HLA



8252-P6HR3



8252-P6HL



8252-P6HRH



8252-P6H3



8252-P6HH

## Lanyards

All lanyards on this page meet OSHA 1926.500 subpart M, 1910.66 appendix C, ANSI A10.14 and Z359.1 standards;  
Lanyards must be used with a full body harness

### Tie Back Style Lanyards

8252-P6H3CK	6' Tie Black Style Y-Lanyard w/ 3 Double Locking Snaphooks & 2 Tie back D-Rings
8252-P6H3LT	6' Tie Back Style Y-Lanyard w/ 1 loop Attachment & 2 Double Locking Snaphooks & 2 Tieback D-Rings
8252-P6HHCK	6' Tie Back Style Lanyard w/ 2 Double Locking Snaphooks

### Shock Absorbing Lanyards - Polyester Web

8252 Series Shock Absorbing Expander Lanyards  
*1" Polyester Webbing with Clear Cover / Double Locking Snaphooks*

8252-P2HH	2' Lanyard w/ 2 Double Locking Snaphooks
8252-P2HO	2' Lanyard w/ 1 Double Locking Snaphook & 1 O-Ring
8252-P4H3	4' Y-Lanyard w/ 3 Double Locking Snaphooks
8252-P4HH	4' Lanyard w/ 2 Double Locking Snaphooks
8252-P2HL	4' Lanyard w/ 1 Double Locking Snaphooks & 1 Web Loop
8252-P4HLH	4' Lanyard w/ 1 Double Locking Snaphook & 1 9127 Ladder Hook
8252-P4HRH	4' Lanyard w/ 1 Double Locking Snaphook & 1 9180 Rebar Hook
8252-P6H3	6' Y-Lanyard w/ 3 Double Locking Snaphooks
8252-P6H3L	6' Y-Lanyard w/ 2 Double Locking Snaphooks & 1 Web Loop
8252-P6HH	6' Lanyard w/ 2 Double Locking Snaphooks
8252-P6HHA	6' Adjustable Lanyard w/ 2 Double Locking Snaphooks
8252-P6HL	6' Lanyard w/ 1 Web Loop & 1 Double Locking Snaphook
8252-P6HLA	6' Lanyard w/ 1 Double Locking Snaphook 1 9127 Ladder Hook
8252-P6HLH	6' Lanyard w/ 1 Double Locking Snaphook 1 9127 Ladder Hook
8252-P6HR3	6' Y-Lanyard w/ 1 Double Locking Snaphook 2 9180 Rebar Hooks
8252-P6HRH	6' Lanyard w/ 1 Double Locking Snaphook 1 9180 Rebar Hook

### Shock Absorbing Lanyards - Steel Cable

8252-C4HH	4' Galvanized Cable Lanyard w/ 2 Double Locking Snaphook
8252-C6HH	6' Galvanized Cable Lanyard w/ 2 Double Locking Snaphook
8252-C6H3	6' Galvanized Cable Y-Lanyard w/ 3 Double Locking Snaphooks

### Accessories

8250-NOMX4	Universal Nomex Lanyard Cover for 4 ft. Lanyards
8250-NOMX6	Universal Nomex Lanyard Cover for 6 ft. Lanyards
8250-FRSLV6	6' Fire retardant Lanyard Protective Sleeve

Nomex is a Dupont Registered Trademark

## 8260, 8270, 8280 Lanyards

All lanyards on this page meet OSHA 1926.500 subpart M, 1910.66 appendix C, ANSI A10.14 and Z359.1 standards;  
Lanyards must be used with a full body harness

### Work Positioning Lanyards - Steel Cable

8260 Series Steel Cable Lanyards NOT FOR FALL ARREST

8260-C10  
8260-C12FT  
8560-C36

10' Steel Cable D-Ring Extension Lanyard  
12' x 3/8" Steel Cable Eye & Eye Lanyard  
36" x 6/6" Galvanized Steel Cable Eye & Eye Sling

### Work Positioning Lanyards - Polyester Rope

8270 Series Rope Lanyards NOT FOR FALL ARREST

*1/2" Polyester Rope*

8270-P3RHH  
8270-P4RHH  
8270-P6RHH  
8270-P20RHH  
8270-PR5HE050

3' Lanyard w/ 2 Double Locking Snaphooks  
4' Lanyard w/ 2 Double Locking Snaphooks  
6' Lanyard w/ 2 Double Locking Snaphooks  
20' x 1/2" Polyester Rope Lanyard w/ Hook & Eye  
50' x 5/8" Polyester Rope Lanyard w/ Hook & Eye

### Work Positioning Lanyards - Polyester Rope

8280 Series Web Lanyards NOT FOR FALL ARREST

8280-P2WHH  
8280-P2WHO  
8280-P3WHH  
8280-P3WHHC  
8280-P3WHO  
8280-P3WRH  
8280-P4WHH  
8280-P4WHL  
8280-P4WRH  
8280-P6WHH  
8280-P6WHHA  
8280-P6WHL  
8280-P6WHLA  
8280-P9WHHA  
8280-RPHR18

2' Lanyard w/ 2 Double Locking Snaphooks  
2' Extension Lanyard w/ 1 Double Locking Snaphook & 1 O-Ring  
3' Lanyard w/ 2 Double Locking Snaphooks  
3' Work Positioning Lanyard w/ Protective Sleeve Cover  
3' Extension Lanyard w/ 1 Double Locking Snaphook & 1 O-Ring  
3' Work Positioning Lanyard w/ Rebar Hook  
4' Lanyard w/ 2 Double Locking Snaphooks  
4' Work Positioning Lanyard w/ 1 Rebar Hook & 1 Snaphook  
4' Work Positioning Lanyard w/ Rebar Hook  
6' Lanyard w/ 2 Double Locking Snaphooks  
6' Lanyard w/ 2 Double Locking Snaphooks, Adjustable  
6' Lanyard w/ 1 Rebar Hook and 1 Snaphook  
6' Lanyard w/ 1 Rebar Hook and 1 Snaphook, Adjustable  
9' Lanyard w/ 2 Double Locking Snaphooks, Adjustable  
18" Hook & Rebar Hook Positioning Assembly

### Work Positioning Lanyards - Polyester Rope

8280 Series Web Lanyards NOT FOR FALL ARREST

8280-P2WHH  
8280-RPHR18

Rebar Chain Assembly w/o Swivel  
Advantage Rebar Chain w/ 4 Links  
Web Lanyard w/ Rebar Hook & 2 Snaphooks  
Rebar Chain w/ #9180 Hook & Swivel  
Rebar Web Assembly w/ Large Swivel Rebar Hook

### Rebar Chain & Web Assembly

NOT FOR FALL ARREST 5/8" Polyester Rope

2350-P6RH

LanLok 7' Rope Lanayrd w/ 1 Double Locking Snaphook & 1 Manual Rope Lock Device

## Advantage<sup>™</sup> RoofRite System

The Advantage RoofRite System is the ideal fall protection means for sloped roof construction applications. The RoofRite bracket attaches to sloped roofs at the peak of wood frame structures to provide a stable anchor point. The complete RoofRite system includes: 1 roof bracket, mounting nails, 25' rope lifeline with double locking carabiner, Ropelok with shock-absorbing lanyard and full body harness. When installed properly, the RoofRite system provides a 5,000 lbs. single use anchorage.

- For fall arrest & fall resistant
- Rated for one worker with tools to 310 lb.
- Reduces swing fall hazards
- Available in 25' or 50' systems
- Quick installation
- Convenient storage container protects equipment
- Chemical resistant polyester harness, lanyard and lifeline
- Lightweight harness is comfortable and easy to use
- Separate serial number for each harness and Ropelok for tracking and record keeping
- Meets OSHA and ANSI standards



9300-RK3

### Materials

*Bracket:* 14 Gauge, double sided galvanized sheet metal

*D-Ring:* Forged steel with zinc plating

*Nails:* 16D Coated screw nails

*Rope Lifeline:* 5/8" Polyester w/ double locking carabiner

### Available Models:

9300-RK3, 25' RoofRite System

9300-RK4, 50' RoofRite System

### Available Separately:

9300-RB1: Roof Bracket Only

2500-OP3E3: Ropelok Lanyard Combo



4400-BA1



**Anchorage Slings - Wrap Style**

- Chemical resistant polyester webbing
- Several lengths and styles available



**Anchorage Slings - Choker Style**

- Chemical resistant polyester webbing
- Several lengths and styles available



**Skybar**

- Connects to anchorage beams
- Mobile: Easy to move
- Three configurations available



**Skybar 3**

- Portable anchorage clamp
- Connects to anchorage beam
- Clamps to beams, ladders and rails
- Can be connected in any direction



**D-Bolt and I-Bolt**

- Bolts to anchorage
- Reduce chance of burst-out and roll-out
- Provides identifiable, permanent fall protection anchorage



**Anchorage Hooks - Wire Form**

- Squeeze to open
- Attaches around anchorage beam
- Available in three sizes
- Made from stainless steel



**I-Anchor - I-Beam Clamp**

- Attaches to I-beam anchorage
- Adjusts to fit a variety of widths
- No drilling or welding required



**Ankalok - Extension Pole Anchorage**

- First man up anchorage connector
- Fiberglass "hot stick" pole extends up to 24 feet
- Available with several fall protection systems



**D-Ring Plate**

- Bolts or welds to anchorage
- Reduces the chance of burst-out or roll out
- Provides identifiable, permanent fall protection anchorage



**I-Beam Trolley**

- Glides along I-beam to provide mobile anchorage
- Adjusts to fit common I-beam sizes
- Use with a self-retracting lanyard for 2-D protection



**Carabiners**

- Double locking
- 100% proof loaded
- Available in variety of sizes
- Triple locking available



**Anchorage Hook with Strap and D-Ring**

- Large snaphook opening
- Chemical-resistant polyester webbing
- D-ring compatible with standard size snaphook

# Anchorage Connectors

Meets OSHA 1926.500 subpart M, 1910.66 appendix C, ANSI A10.14 and Z359.1 standards;

## Anchor Slings

6600 Series anchor Slings *Polyester Webbing / Zinc-plated forged steel D-Rings*

6600	60" Long x 4" Wide Sling w/ 2 D-Rings
6600-48	48" Long x 4" Wide Sling w/ 2 D-Rings
6601	60" Long x 4" Wide Choker Sling w/ 2 D-Rings
6601-120	10" Long x 4" Wide Choker Sling w/
6601-36	36" Long x 4" Wide Choker Sling w/
6601-96	96" Long x 4" Wide Choker Sling w/ 2 D-Rings
6602	15" Long x 1" Wide Choker Sling w/ 1 D-Ring
6603	2' Choker Web Anchor Sling
6603-32	32" Choker Web Anchor Sling
6604	5' Long x 2" Wide Choker Sling
6604-6	6' Long x 2" Wide Choker Sling
9260-SLING	6' x 3/8" Cable Sling w/ Loop Ends
9260-SLING12	3/16" x 12' Extension cable w/ Carabiner & O-Ring

## Lightweight Portable I-Beam anchorage

*Available in models for 3.5" to 16" anchorage applications*

9450-SBAR	SkyBar-Sliding Anchorage for Horizontal I-Beam
9450-SBAR2	SkyBar-Fixed Anchorage for Horizontal I-Beam
9450-SBAR3	SkyBar-Fixed Anchorage for Horizontal or Vertical I-Beams – Multidirectional Loading

## High Load I-Beam anchorage

*Adapts to beam flange sizes from minimum width & thickness of 5.99" x 0.260" respectively to a maximum width & thickness of 21.0" x 1.0" respectively. For horizontal lifeline anchorage applications*

9450-ANCHOR	Steel I-Beam Anchor Point
-------------	---------------------------

## Anchorage Connectors

9450-DBOLT	D-Bolt Assembly
9450-DPLT	D-Ring Plate w/ D-Ring Only
9450-DPLTF	D-Ring Plate w/ D-Ring & Fasteners
9450-IBOLT	I-Bolt Assembly
9450-P2DR	Anchor Hook w/ Strap & D-Ring

## Anchor Hooks

*9100 Series Pipe Hooks*

91901	Small Anchor Hook w/ 3.9" opening
91902	Medium Anchor Hook w/ 4.7" opening
91903	Large Anchor Hook w/ 6.3" opening
91906	Large Anchor Hook w/ 6.3" opening (3" attachment opening)

## Stainless Steel EyeroD Bolt

9260-SSTURN1	18" Adjustable EyeroD (Includes washer plates and nuts)
9260-SSTURN1X	26" Adjustable EyeroD (Includes washer plates and nuts)

**Carabiners** 9100 Series Auto-Locking Carabiner Snaphooks *Zinc Plated Steel Twist-Lock*

9108-A	2" Opening Carabiner
9111-A	5/8" Opening Carabiner
9111-SA	Small Stainless Steel Carabiner Package
9112	Triple Lock Steel Carabiner
9120-A	3/4" Aluminum Small Opening Carabiner
9121-A	2" Aluminum Large Opening Carabiner

## First-Man-Up Equipment

2400 Series Ankalok temporary Anchorage System *Fiberglass Non-Conductive Telescoping Pole Steel Hook - Work positioning harness & lanyard sold separately, fits up to 6" wide member*

2400-ANKA1	Ankalok w/ 2300-OP3E Ropelok rope grab, 20' 5/8" polyester rope & 5500 Series tote bag
2400-ANKA3	Ankalok w/ 2008 Retractor lanyard & 5500 series tote bag

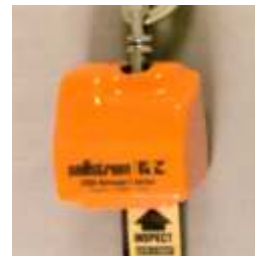


### 2008 Series Retractor

#### Compact and Durable Self-Retracting Web Lanyard

The 2008 Series Retractor is compact and lightweight. This durable retracting web lanyard provides the worker with up to 11 feet of mobility from the anchorage. The 2008 Retractor features our unique Safe-T-Fold stress indicator which alerts the user when the device has been stressed. An inertia braking mechanism provides instant locking when a fall occurs. The self-retracting lanyard minimizes tripping hazards and dangerous falls that can occur with rope lanyards.

- Safe-T-Fold stress indicator alerts user when device has been stressed
- Sturdy steel covered with neoprene housing weighs only 3 lbs.
- Quick and easy installation
- Inertia braking mechanism
- Chemical resistant polyester webbing
- Specialized webbing provides additional energy absorption
- Separate serial number for each lanyard for tracking and record keeping
- Meets OSHA 1926.500 subpart M, 1910.66 appendix C, ANSI A10.14 and Z359.1 standards



*Safe-T-Fold  
Stress Indicator*

## Retractable Lanyards

All self-retracting lanyards on this page meet OSHA 1926.500 subpart M, 1910.66 appendix C, ANSI A10.14 and Z359.1 standards

### Web SRLs

Shock Absorbing Expander Lanyards

*Neoprene Covered Steel Housing / 2" wide Polyester Webbing*

*Features Safe-T-Fold Stress Indicator*

2008-PO5	5' Retractor W/ Load Arrestor
2008-PO7	7' Retractor w/o Carabine w/ 3/4" Double Locking Snaphook on Web Assembly
2008-PHO7	7' Retractor w/ #2008-PHO9 Components
2008-PHO7L	7' Retractor w/ Poly Web and Loop End
2008-PO9	9' Retractor w/o Carabine w/ 3/4" Double Locking Snaphook on Web Assembly
2008-PCO9	9' Retractor w/ Stainless Steel Swivel & 9108-A Carabiner w/ 3/4" Double Locking Snaphook on Web Assembly
2008-PCO9AL	2008-PCO9 w/ Aluminum Carabines
2008-PHO9	9' Retractor w/ Stainless Steel Swivel w/ 9111-A carabiner w/ 3/4" Double Locking Snaphook on Web Assembly
2008-PSO9	9' Retractor w/ Stainless Steel Swivel w/ 9111-A carabiner on Web Assembly
2008-PH10L	10' Retractor w/ Poly Web Loop End
2008-PC11	11' Retractor w/o Carabiner w/ 3/4" Double Locking Snaphook on web Assembly
2008-PH11	11' Retractor w/ 2 - #9111 Carabiner & Swivel Snaphook on Web Assembly
2008-PC119	Retractor w/ 2 - #9111 Carabiner & Swivel
2008-P119125	11' Retractor w/ Stainless Steel Swivel & 2 Double Locking Snaphooks

### 2700 Series Retractalok

Proven Tough Self-Retracting Lanyards

The 2700 Series Retractalok retracting lanyards provide state-of-the-art centrifugal braking technology to minimize free fall distance while cushioning the fall. Rugged aluminum or plastic housings are lightweight and chemical resistant. Every Retractalok has one Safe-T-View stress indicator which automatically alerts the user that the device has been stressed. The 2700 Series is available with polyester web, stainless steel, galvanized or high-strength fiber cable. This affordable lanyard will provide years of dependable service.

- Safe-T-View alerts user when the unit has been stressed
- State-of-the-art centrifugal braking mechanism
- Eliminates slack cable hazards
- Double locking snaphook
- Galvanized, stainless steel, Kevlar-fiber or polyester web lifelines are available
- Lengths up to 170 ft.
- Two year recertification period
- Easy to install and use
- Separate serial number for each lanyard for tracking and record keeping
- Meets OSHA 1926.500 subpart M, 1910.66 appendix C, ANSI A10.14 and Z359.1 standards



2704 Series



2706 Series



2706-PW15



2706-SP25



Safe-T-View Stress Indicator

## Retractable Lanyards

All self-retracting lanyards on this page meet OSHA 1926.500 subpart M, 1910.66 appendix C, ANSI A10.14 and Z359.1 standards

### Steel Cable SRLs

2706 Series Retractalok

*Molded Plastic Housing / 3/16" - 7x19 Aircraft Steel Cable / Features Safe-T-View Stress Indicator*

8260-C10  
8260-C12FT  
8560- C36

25' Galvanized Steel Cable w/ 3/4" Double Locking Snaphook  
30' Galvanized Steel Cable w/ 3/4" Double Locking Snaphook  
50' Galvanized Steel Cable w/ 3/4" Double Locking Snaphook  
25' Stainless Steel Cable w/ 3/4" Double Locking Snaphook  
50' Stainless Steel Cable w/ 3/4" Double Locking Snaphook  
50' Stainless Steel Cable w/ 3/4" Stainless Steel Double Locking Snaphook

### Web SRLs

8270 Series Retractalok

*Molded Plastic Housing / 1" Polyester Webbing / Features Safe-T-Fold Stress Indicator*

2706-PW15  
2706-PW25

15' Web Retraktalok w/ 3/4" Double Locking Snaphook on Web Assembly  
25' Web Retraktalok w/ 3/4" Double Locking Snaphook on Web Assembly

### Steel Cable SRLs

2706 Series Retractalok

*Cast Aluminum Housing / 3/16" - 7x19 Aircraft Steel Cable / Features Safe-T-View Stress Indicator*

2706-G25  
2706-G50  
2706-G80  
2706-G110  
2706-G140  
2706-S25  
2706-S50  
2706-S65  
2706-S80  
2706-S110  
2706-S140  
2706-S170

25' Galvanized Steel Cable w/ 3/4" Double Locking Snaphook  
50' Galvanized Steel Cable w/ 3/4" Double Locking Snaphook  
80' Galvanized Steel Cable w/ 3/4" Double Locking Snaphook  
110' Galvanized Steel Cable w/ 3/4" Double Locking Snaphook  
140' Galvanized Steel Cable w/ 3/4" Double Locking Snaphook  
25' Stainless Steel Cable w/ 3/4" Double Locking Snaphook  
50' Stainless Steel Cable w/ 3/4" Double Locking Snaphook  
65' Stainless Steel Cable w/ 3/4" Double Locking Snaphook  
80' Stainless Steel Cable w/ 3/4" Double Locking Snaphook  
110' Stainless Steel Cable w/ 3/4" Double Locking Snaphook  
140' Stainless Steel Cable w/ 3/4" Double Locking Snaphook  
170' Stainless Steel Cable w/ 3/4" Double Locking Snaphook

### Steel Cable SRLs

2704 Series Retractalok

*Cast Aluminum Housing / 3/16" - 7x19 Aircraft Steel Cable / Features Safe-T-View Stress Indicator*

2704-G25  
2704-G50  
2704-S15  
2704-S25  
2704-S25S  
2704-S50  
2704-S50S

25' Galvanized Steel Cable w/ 3/4" Double Locking Snaphook \*\*NON-STOCK ITEM  
50' Galvanized Steel Cable w/ 3/4" Double Locking Snaphook \*\*NON-STOCK ITEM  
15' Stainless Steel Cable w/ 3/4" Double Locking Snaphook  
25' Stainless Steel Cable w/ 3/4" Double Locking Snaphook  
25' Stainless Steel Cable w/ 3/4" Double Locking Stainless Steel Snaphook \*\*NON-STOCK ITEM  
50' Stainless Steel Cable w/ 3/4" Double Locking Snaphook  
50' Stainless Steel Cable w/ 3/4" Double Locking Stainless Steel Snaphook \*\*NON-STOCK ITEM

### Steel Cable SRLs

2704 Series Retractalok

*Cast Aluminum Housing / 1/4" Kevlar Cable / Features Safe-T-View Stress Indicator*

2704-F25  
2706-F70  
2706-F95

25' Kevlar Cable w/ 3/4" Double Locking Snaphook  
70' Kevlar Cable w/ 3/4" Double Locking Snaphook  
95' Kevlar Cable w/ 3/4" Double Locking Snaphook

## Confined Space Systems

### Fall Protection for Entry Retrieval

RTC provides versatile fall protection and emergency rescue systems to meet your confined space needs. On our tripods, the triple hanging plate provides a fall protection anchorage for the user and the attendant. The absence of leg chains reduces the tripping hazard near the confined space opening. The Extricator Series of self-retracting lanyards is equipped with an emergency rescue winch. Extricators are available with cable lengths of up to 140 ft. The Manload Winch provides emergency personnel retrieval and material lifting and lowering. Together they comprise the ultimate in a portable confined space system.

- No hazardous leg chains on tripod
- Tripod meets OSHA 5,000 lbs. Anchorage point requirement
- Adjustable tripod legs
- Tripod head provides fall protection anchorage for more than one user
- Multifunction Extricator provides fall arrest and retrieval capabilities of up to 140 lbs.
- Extricator available with galvanized or stainless steel cable
- Some Extricator models available with high strength Kevlar fiber cable
- Manload Winch provides winching capabilities for human or material lifting up to 150 ft.
- Manload Winch available with stainless steel or high strength Kevlar cable
- Meets OSHA and ANSI standards

*5500 Series Tripods*



*2756 Extricator*



*Manload Winch*



## Confined Space Equipment List

All Confined Space Components on this page meet OSHA 1910.146

### Tripods

5500 Series Tripods

*Lightweight Aluminum / No Leg Chains Required*

- 5500-AT7 7' Adjustable tripod w/ 5500-TOT7 & one 5500-SPLATE guide pulley plate assembly
- 5500-AT10 10' Adjustable tripod w/ 5500-TOT10 & one 5500-SPLATE guide pulley plate assembly

### Extricators

2756 Series Extricator II - Steel Cable

*Cast Aluminum Housing / SS Cable / Bracket Not Included*

- 2756-S25 25' 3-Way Extricator II w/ stress indicator
- 2756-S50 50' 3-Way Extricator II w/ stress indicator
- 2756-S80 80' 3-Way Extricator II w/ stress indicator
- 2756-S110 110' 3-Way Extricator II w/ stress indicator
- 2756-S140 140' 3-Way Extricator II w/ stress indicator

2756 Series Extricator II - Galvanized Steel Cable

*Cast Aluminum Housing / Galvanized Steel Cable / Bracket Not Included*

- 2756-G25 Extricator w/ 25' Galv. Cable & stress indicator
- 2756-G50 Extricator w/ 50' Galv. Cable & stress indicator
- 2756-G80 80' 3-way Extricator w/ stress indicator
- 2756-G110 110' 3-way Extricator w/ stress indicator
- 2756-G140 140' 3-way Extricator w/ stress indicator

2756 Series Extricator II - Accessories

*Mounting Brackets*

- 2756-GBRACKT1 2756 Bracket Assembly 80' or more
- 2756-GBRACKT2 2756 Bracket Assembly 25'
- 2756-GBRACKT3 2756 Bracket Assembly 50'

### Winches

5580 Series Manload Winches

*Mounting Bracket Included*

- 5580-G80 Manload Winch w/ 80' Galvanized Cable
- 5580-K55 Manload Winch w/ 55' Kevlar Jacketed Cable
- 5580-K110 Manload Winch w/ 110' Kevlar Jacketed Cable
- 5580-S55 Manload Winch w/ 55' Stainless Steel Cable
- 5580-S110 Manload Winch w/ 110' Stainless Steel Cable
- 5580-S150 Manload Winch w/ 150' Stainless Steel Cable
- 5580-MBKTA Manload Mounting Bracket Assembly

### Confined Entry & Retrieval Systems

Confined Space System 3 - 7' Tripod

*CONF-SYS003 Confined Space Retrieval System includes:*

- (1) 5500-AT7 - 7' Adjustable tripod w/ 5500-TOT7 Tripod tote bag, (1) 2756-S50 Extricator II w/ 50' SS cable (1) 2761-GBRACKT3 Extricator Mounting Bracket, (1) 9600-TOTL Large (12" x 24") equipment tote bag

Confined Space System 4 - 7' Tripod

*CONF-SYS004 Confined Space Retrieval System includes:*

- (1) 5500-AT7 - 7' Adjustable tripod w/ 5500-TOT7 Tripod tote bag, (1) 2756-S50 Extricator II w/ 50' SS cable (1) 2756-GBRACKT3 Extricator Mounting Bracket, (1) 5580-S55 Manload Winch (1) 5500-SPLATE Guide Pulley Plate Assembly, (1) 9600-TOTL Large (12" x 24") equipment tote bag

Confined Space System 11 - 10' Tripod

*CONF-SYS011 Confined Space Retrieval System includes:*

- (1) 5500-AT10 - 10' Adjustable tripod (1) 2756-S50 Extricator II w/ 50' SS cable, (1) 2756-GBRACKT3 Extricator Mounting Bracket, (1) 9600-TOTL Large (12" x 24") equipment tote bag

Confined Space System 12 - 10' Tripod

*CONF-SYS012 Confined Space Retrieval System includes:*

- (1) 5500-AT10 - 10' Adjustable tripod w/ 5500-TOT10 Tripod tote bag, (1) 2756-S50 Extricator II w/ 50' SS cable (1) 2756-GBRACKTR Extricator Mounting Bracket, (1) 5580-S55 Manload Winch (1) 9600-TOTL Large (12" x 24") equipment tote bag

Confined Space System 17 - 7' Tripod

*CONF-SYS017 Confined Space Retrieval System includes:*

- (1) 5500-AT7 - 7' Adjustable tripod w/ 5500-TOT7 Tripod tote bag, (1) 2756-S25 Extricator II w/ 25' SS cable (1) 2756-GBRACKT2 Extricator Mounting Bracket, (1) 9600-TOTL Large (12" x 24") equipment tote bag

### Confined Space Accessories

Rescue Accessories

- 5500-PINPKG 3 Replacement Tripod Leg Pins
- 5560-T10 Tote Bag for 10' Tripod
- 7400-SPY Polyester Web Spreader Bar Assembly
- 5500-SPLATE Tripod Pully Plate

Equipment Tote Bags

- 9600-TOTL 3 Replacement Tripod Leg Pins
- 9600-TOT10 Tote Bag for 10' Tripod
- 9600-TOTS 10" x 14" Small Equipment Tote Bag
- 9600-TOTH 12" x 24" Nylon Harness Tote Bag w/ Drawstring
- 7400-PKT Lanyard Tote Bag Harnesses

## 2300 Ropelok

Portable, Lightweight Rope Grab Device for Vertical Lifelines

The 2300 Ropelok vertical lifeline rope grab is ideal for scaffold and/or tower work. It is easily added to and removed from RTC approved lifelines without hinge-pin fumbling. The unit rolls freely, yet locks instantly should a worker fall. The 2300 Ropelok includes a low arresting force shock-absorbing polyester lanyard. The Ropelok is designed to be used with RTC approved. 5/8 inch diameter polyester, weather resistant Permacable.

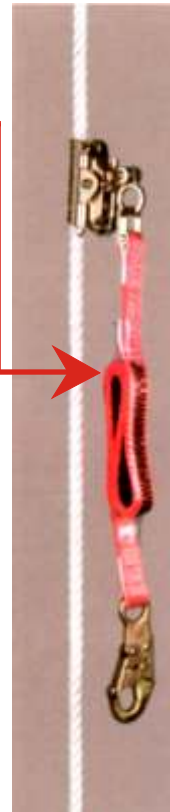
- Portable & Lightweight
- Hands-free operation
- Removes from rope in seconds
- Instant locking
- Easy cleaning, inspection & maintenance
- Chemical resistant polyester rope
- Three strand polyester rope lifeline allows inspection of inner fibers
- Lifelines available in custom lengths
- Spliced eye in lifeline makes installation easy and secure
- Rope weight keeps lifeline taut
- Separate serial number for each rope grab for tracking and record keeping
- Conforms OSHA and ANSI standards

*Simple, dependable one-piece assembly*

*Low MAF shock absorbing lanyard*



*Spliced Eye*



*Rope weight on rope*

## Vertical Lifelines

Meets OSHA 1926.500, 1910.66 ANSI A10.14 and Z359.1 Standards

### Rope Grabs

*For use with 5/8" or 3/4" diameter polyester rope and/or weather-resistant Permacable*

2300-9111

Vertical Lifeline Ropegrab w/ Carabiner for Fixed Ladder System

2300-OP3E

Vertical Lifeline Ropegrab w/ 2' Shock Absorbing Lanyard

2300-OP3E3

Vertical Lifeline Ropegrab w/ 3' Shock Absorbing Lanyard

2300-RPLK

Ropelok Device

2300-WEIGHT

3 lb. Rope Weight

2500-OP3E3

Roofing Ropegrab w/ 3' Shock Absorbing Lanyard

2500-WEIGHT

2 lb. Rope Weight (Roof)

### Rope Lifelines

*5/8" Polyester Rope – Each lifeline includes spliced eye for upper connection – Carabiners sold separately – Contact RTC for availability of custom length lifelines*

9450-PSS58020

20' Rope Lifeline w/ Spliced Eye / Back Splice

9450-PSE58010

10' Rope Lifeline w/ Spliced Eye

9450-PSE58015

15' Rope Lifeline w/ Spliced Eye

9450-PSE58020

20' Rope Lifeline w/ Spliced Eye

9450-PSE58025

25' Rope Lifeline w/ Spliced Eye

9450-PSE58030

30' Rope Lifeline w/ Spliced Eye

9450-PSE58035

35' Rope Lifeline w/ Spliced Eye

9450-PSE58040

40' Rope Lifeline w/ Spliced Eye

9450-PSE58045

45' Rope Lifeline w/ Spliced Eye

9450-PSE58050

50' Rope Lifeline w/ Spliced Eye

9450-PSE58055

55' Rope Lifeline w/ Spliced Eye

9450-PSE58060

60' Rope Lifeline w/ Spliced Eye

9450-PSE58065

65' Rope Lifeline w/ Spliced Eye

9450-PSE58070

70' Rope Lifeline w/ Spliced Eye

9450-PSE58075

75' Rope Lifeline w/ Spliced Eye

9450-PSE58080

80' Rope Lifeline w/ Spliced Eye

9450-PSE58085

85' Rope Lifeline w/ Spliced Eye

9450-PSE58090

90' Rope Lifeline w/ Spliced Eye

9450-PSE58095

95' Rope Lifeline w/ Spliced Eye

9450-PSE58100

100' Rope Lifeline w/ Spliced Eye

9450-PSE58130

130' Rope Lifeline w/ Spliced Eye

9450-PSE58150

150' Rope Lifeline w/ Spliced Eye

9450-PSE58180

180' Rope Lifeline w/ Spliced Eye

9450-PSE58200

200' Rope Lifeline w/ Spliced Eye

9450-PSE58220

220' Rope Lifeline w/ Spliced Eye

9450-PSE58250

250' Rope Lifeline w/ Spliced Eye

9450-PSE58330

330' Rope Lifeline w/ Spliced Eye

### Rope Lifelines

*5/8" Polyester Rope Lifelines w/ Splices as indicated / For custom lengths / Contact us for details*

9450-PRHH025

25' x 5/8" Poly Rope w/ 2 D.L. Snaphooks

9450-PRHH100

100' Poly Rope w/ 2 D.L. Snaphooks

9450-PSE8100H

100' Polyester Rope Lifeline w/ 1 Snaphook & Spliced Eye

9450-PSH58025

25' Polyester Rope Lifeline w/ 1 Snaphook

9450-PSH58050

50' Polyester Rope Lifeline w/ 1 Snaphook



## CableGrab Ladder Safety System

### Vertical Fall Arrest for Ladder Climbing Applications

The 2001 Series Cable Grab is a hands-free unit used for vertical fall arrest protection on 3/8" galvanized or stainless steel cable. It travels with the user and is ready to provide fall arrest at an instant. It is ideal for ladder climbing, telecommunication towers, water towers, billboards and the like. The unit can be used with the RTC ladder climbing system, which includes galvanized cable, termination hardware, ladder brackets, rung clamps and cable guides.

- Portable & Lightweight
- Locks in an instant in the event of a free-fall
- Easy installation
- Hands-free operation, does not interfere with climbing
- Portable and lightweight
- Release pins allow for quick attachment to safety cable
- Will not ride to the ground form a "panic grip"
- CableGrab can be removed for end of day storage or relocation to another safety cable
- Can be used with front or side D-Ring harnesses
- Ladder extensions available
- Can be used with galvanized or stainless steel cable
- Meets ANSI A14.3, OSHA 1910.27, 1926.1053 standards



## Vertical Ladder Systems

### Ladder Safety Systems - Cable

2001 Series Cable Grabs

*Available with 3/8" 7x9 galvanized steel cable (stainless steel also available)*

*Systems include cable, turnbuckle, clamp thimble, shackle and 2 cable clips.*

*Cable grab unit and ladder brackets sold separately*

2001-9111	CableGrab Unit w/ Carabiner for Ladder Climbing Use
2001-0P3E3	CableGrab Unit w/ 3' Shock Absorbing lanyard for Vertical Lifeline Use
2001-GC38030	30' Cable Lifeline System
2001-GC38040	40' Cable Lifeline System
2001-GC38050	50' Cable Lifeline System
2001-GC38060	60' Cable Lifeline System
2001-GC38070	70' Cable Lifeline System
2001-GC38080	80' Cable Lifeline System
2001-GC38090	90' Cable Lifeline System
2001-GC38100	100' Cable Lifeline System
2001-GC38110	110' Cable Lifeline System
2001-GC38120	120' Cable Lifeline System
2001-GC38030	130' Cable Lifeline System
2001-GC38140	140' Cable Lifeline System
2001-GC38150	150' Cable Lifeline System
2001-GC38160	160' Cable Lifeline System
2001-GC38170	170' Cable Lifeline System
2001-GC38180	180' Cable Lifeline System
2001-GC38190	190' Cable Lifeline System
2001-GC38200	200' Cable Lifeline System
2001-GC38210	210' Cable Lifeline System
2001-GC38220	220' Cable Lifeline System
2001-GC38230	230' Cable Lifeline System
2001-GC38240	240' Cable Lifeline System
2001-GC38250	250' Cable Lifeline System

### Ladder Bracket & Guides

*One rung clamp required for every cable guide, 2 rung clamps required for every ladder bracket or ladder extension*

2500-BRACK	304 Ladder Bracket
2500-BRACK316	316 Ladder Bracket
2500-BRACKE	304 Ladder Extension ( <i>When ordering, order an additional 10' of cable</i> )
2500-BRACKE316	316 Ladder Extension
2500-GUIDE	Cable Guide ( <i>Required every 25'</i> )

## 2000 Climb-Rite

100% Fall Protection While Climbing Ladders

The 2000 Climb-Rite is a fixed flat rail climbing protection system, that uses a detachable sliding sleeve that rolls freely, both up and down RTC rail (1/4" x 2"). Though primarily designed for climbing protection on vertical fixed ladders that meet OSHA and ANSI A14.3 standards, it can also be used above and below ground, on interior or exterior surfaces. It is designed to lock the instant a fall begins, bringing the four hardened steel brakes into contact with the rail. The complete climbing system has been designed without rail notches or serrations that corrode and rust. Rail system extensions are available for safe ladder access and egress.

- Hands-free movement up and down ladder
- Rail system is easy to install and maintain
- Climbing device weighs only 2 lbs.
- Arresting unit is easily installed and removed from rail
- Type 316 stainless steel rail is available for marine or other corrosive environments
- All ladder hardware is corrosion resistant stainless steel
- Can be mounted to side or center of ladder
- Ladder extensions available
- Meets ANSI A14.3, OSHA 1910.27, 1926.1053 standards

*Arresting Unit*



*Front D-Ring shown in use with RTC Climb-Rite*



*Rung Clamp*



*Rail Splice*



*SkySwivel  
Extension Rotation Device*

# Ladder Safety Systems Accessories

## Ladder Extension Parts

*1 Rung Clamp required for every 4' section of Rail, 1 Splice required for each Rail Connection*

*2 Rung Clamps required with each Extension*

*\*9200-SLEF and 9200-SLEREM are available in 316 stainless steel*

9200-ALEREM	Removable Aluminum Extension Kit
9200-ERLSTP	Permanent Rail Stop/Climb-Rite w/ Extension
9200-PIN1	Trolley Parking Pin
9200-RLSTP	Permanent Rail Stop for Climb-Rite Rail System
9200-SLEF	Permanent 304 Stainless Steel Extension
9200-SLEF316	Permanent 316 Stainless Steel Extension
9200-SLERE	304 Stainless Steel Removable Ladder Extension
9200-SLERE316	316 Stainless Steel Removable Ladder Extension
9200-SLEREM	Removable 304 Stainless Steel Extension Kit
9200-SLEREM316	316 Stainless Steel Removable Ladder Extension Kit
9200-SRC0625R	5/8" Diameter Stainless Steel Round Rung Clamp
9200-SRC0750R	3/4" Diameter Stainless Steel Round Rung Clamp
9200-SRC0750S	3/4" Diameter Stainless Steel Square Rung Clamp
9200-SRC0875R	7/8" Diameter Stainless Steel Round Rung Clamp
9200-SRC0875S	7/8" Diameter Stainless Steel Square Rung Clamp
9200-SRC1000R	1" Diameter Stainless Steel Round Rung Clamp
9200-SRC1000S	1" Diameter Stainless Steel Square Rung Clamp
9200-SRC1250R	1-1/4" Diameter Stainless Steel Round Rung Clamp
9200-SRC1250S	1-1/4" Diameter Stainless Steel Square Rung Clamp
9200-SRC1312R	1-5/16" Diameter Stainless Steel Round Rung Clamp
9200-SRC1312S	1-5/16" Diameter Stainless Steel Square Rung Clamp
9200-SRC1500R	1-1/2" Diameter Stainless Steel Round Rung Clamp
9200-SRC1500S	1-1/2" Diameter Stainless Steel Square Rung Clamp
9200-SRC1625R	1-5/8" Diameter Stainless Steel Round Rung Clamp
9200-SRC1750R	1-3/4" Diameter Stainless Steel Round Rung Clamp
9200-SRC1750S	1-3/4" Diameter Stainless Steel Square Rung Clamp
9200-SSPL	Stainless Steel Rail Splice (Type 316)
9200-SVL	SkySwivel Extension Rotation Device
9200-URC	Universal Stainless Steel Rung Clamp - 1" off set
9200-URC1	Universal Stainless Steel Rung Clamp - 1 1/2" off set
9200-URCL1	Universal Stainless Rung Clamp for L Rungs Mounted to Face
9200-URCL2	Universal Stainless Rung Clamp for L Rungs 1-1/2" off set each

## Ladder Bracket & Guides

*Rail 2000 Series Climb-Rite Lightweight Climbing Device*

2000-DEV	Climb-Rite w/ Double Locking Snaphooks 9200 Series Rail 1/4" x 2" x 10' Sections
9200-AR	10' Aluminum T-Shaped Rail
9200-SR	10' Stainless Steel Rail - Type 304
9200-SR316	10' Stainless Steel Rail - Type 316
9200-SR316T	10' Stainless Steel T-Shaped Rail - Type 316

## Horizontal Systems

### Temporary & Permanent Horizontal Rail Systems

The 9450 Beamwalker System is a temporary, polyester rope horizontal lifeline system. It is easily installed with a wrench, either at D-Ring height or directly overhead. Horizontal installations have a maximum length between anchorage points of 150 feet for use by up to two people at a time. The system can be installed between vertical columns or used with other RTC horizontal lifeline post systems. The 9450 Beamwalker System is ideal for electrical, built-up-scaffolding, tanks, vessels and catwalks. The 9900 Railwalker is a permanent rail system used on ledges, runways and the like. Available in stainless steel or aluminum rail, the 9900 railwalker is ideal for areas with limited clearance. The system can accommodate several workers while maintaining proper distance. The trolley slides easily along the rail. The rail is either installed at shoulder height (as shown below) or at waist height.

### Beamwalker

- Low anchorage forces
- High strength, chemical resistant polyester rope lifeline
- Quick set-up and disassembly
- Continuous protection
- Spans up to 150 feet for one or two workers
- Extremely lightweight one piece system
- Three strand polyester rope allows easy inspection of inner fibers
- Ropevise makes tensioning easy
- One system can be used for many different spans
- Many anchorage connectors are available for use with the Beamwalker
- Available separately or in kit form
- Meets OSHA 1926.500 subpart M, 1910.66 appendix C standards



*The complete Beamwalker Kit is available as shown above or sold separately*

*Splice Plate*

## Horizontal Lifelines & Accessories

### Beamwalker Temporary Lifeline Systems

*1 Beamwalker Lifeline System includes: spliced 5/8" polyester rope lifeline, Ropevise rope tensioner (2) 2" diameter forged steel O-rings and (2) 9111 Carabiners. For 1 or 2 Workers: Sold completely assembled. Kits include Anchor Slings.*

9450-BW30  
9450-BW50  
9450-BW75  
9450-BW100  
9450-BW150  
9450-BW030BG  
9450-BW050BG  
9450-BW075BG  
9450-BW100BG  
9450-BW150BG  
9450-BW030BK  
9450-BW050BK  
9450-BW075BK  
9450-BW100BK

30' Beamwalker Horizontal Lifeline  
50' Beamwalker Horizontal Lifeline  
75' Beamwalker Horizontal Lifeline  
100' Beamwalker Horizontal Lifeline  
150' Beamwalker Horizontal Lifeline  
Includes 30' Beamwalker Kit in Tote Bag  
Includes 50' Beamwalker Kit in Tote Bag  
Includes 75' Beamwalker Kit in Tote Bag  
Includes 100' Beamwalker Kit in Tote Bag  
Includes 150' Beamwalker Kit in Tote Bag  
Includes 30' Beamwalker Kit in Plastic Bucket  
Includes 50' Beamwalker Kit in Plastic Bucket  
Includes 75' Beamwalker Kit in Plastic Bucket  
Includes 100' Beamwalker Kit in Plastic Bucket

### Railwalker Permanent Lifeline System

Railwalker Permanent Rail System

9900-DEV  
9900-DEVSC3  
9900-P3E

Railwalker Trolley w/o Lanyard  
Railwalker Trolley w/ Stainless Steel Cable Lanyard  
Railwalker Trolley w/ 3' Lanyard

Railwalker Permanent Rail System

*1/4" X 2" X 10' Sections / 1 Connector required every 4' / 1 Splice required for each rail section connection / 2 End stops required for each system*

9900-APSTP  
9900-SSTP  
9900-FITNG  
9900-FITNG4  
9900-FITNG5  
9900-FITNG6  
9900-FITNG7

Permanent Stainless Steel Rail Stop  
Spring Loaded Stainless Steel Rail Stop  
Stainless steel connector (0.2" - 1.2")  
Stainless steel connector (1.2" - 2.2")  
Stainless steel connector (2.2" - 3.2")  
Stainless steel connector (3.2" - 9.2")  
Stainless steel connector (4.2" - 5.2")

## Permacable System

### The Lightweight Shock-Absorbing Horizontal Lifeline

RTC Permacable is a pre-engineered, synthetic cable. It is lightweight (only 15 lbs. per 100 ft.), Strong (tensile strength 16,000 lb.) And has excellent resistance to weather and chemicals. The synthetic cable reduces the forces transferred to the anchorage. Permacable meets all recommended OSHA requirements for horizontal lifelines and can span up to 200 feet without intermediate supports. Unlike traditional steel cable which require supports every 30 ft. To 50 ft. It can support up to 4 workers at a time. A special red liner in the cable alerts the user to wear or damage.

Due to technical variations of each application, each system is engineered for the application for which it will be used. Please contact RTC Technical Sales for a fall protection representative near you.

### Permacable

- Spans up to 200 feet and weighs only 15 lbs. Per 100 feet
- Hands-free SkyRider bypass available
- Low anchorage point forces
- Low sag
- High chemical and wear resistance
- Special red liner alerts user to wear or damage
- Allows up to 4 workers
- Several pre-fabricated anchor points, posts and inverted L's are available
- Contact RTC for more information and a free quote
- Turnkey installation available
- Meets OSHA standards for horizontal lifelines



### SkyRider

#### Horizontal Lifeline Bypass System

RTC Permacable horizontal lifelines have always spanned longer distances between anchor points with lower anchorage forces than traditional steel cable, saving money by reducing the size and number of anchorage. Permacable can now optimize the longest spans, with low clearance requirements, while still reducing anchorage forces. The hands-free Sky Rider system allows closer intermediate anchorage spacing to reduce fall distances where clearance is limited. The user enjoys uninterrupted travel along the entire length of the system.

- Hands-free bypass of intermediate anchorage
- Optimizes design of horizontal lifelines
- Easy to install
- Corrosion resistant construction
- Designed for use on RTC Permacable
- Smooth rolling ball bearing construction
- Long spans between intermediate anchors

*SkyRider Device*



*Intermediate Anchorage*



### SkyGirder

Portable and Adjustable Steel or Concrete Beam Anchor Posts

The RTC SkyGirder post system is a prefabricated anchorage for horizontal lifelines. It can be used with our Permacable, steel cable with ShockPak or BeamWalker horizontal lifelines. This post system attaches to steel or concrete beams. It is designed to provide horizontal mobility and fall protection along the length of the beam. Meets OSHA 1926.500 subpart M. And 1910.66 appendix C.

Due to technical variations of each application, each system is engineered for the application for which it will be used. Please contact RTC Technical Sales for a fall protection representative near you.

- Easily adaptable to most AASHTO-PCI concrete girders and AISG steel I-beams
- 7-ft. and 4 ft. posts available
- Lightweight. Heaviest component weighs only 60 lbs.
- Brackets can be installed before setting beams
- Enhances productivity by providing workers with continuous protection
- Meets OSHA 1926.500 Subpart M and 1910.66 appendix C standards



Above: SkyGirder with Permacable in use for bridge construction



Left: Up close view of SkyGirder Bracket on steel I-beam

## Horizontal Rail System Parts

All items listed on this page meet OSHA 1910.66, 1926.500 Standards

### I-Beam Trolley

*Trolley fits beams from 2 5/8" up to 7-1/2"*

9900-TROLLEY2  
9900-TROLLEY4  
9900-TROLLEY6

I-Beam Trolley for I-Beam 2-5/8" to 5-1/6"

I-Beam Trolley for I-Beam 5-1/16" to 7-1/2"

Tank Trolley

### Accessories

9260-BLKSS  
9260-BLOCK  
9260-BP  
9260-IA  
9260-ILT  
9260-ILTA

5/8" Diameter Marine Grade Stainless Steel Pulley Plate

5/8" Diameter Stainless Steel Pulley Plate

Bypass Device for Horizontal Lifelines

Stainless Steel Intermediate Anchor for Permacable By-Pass

Line Pre-Tensioner without Turnbuckle

Line Pre-Tensioner / Complete Assembly

### Horizontal Post Systems

9450 Series Horizontal Post Systems

*Lifeline Systems Ordered Separately*

9450-SGSTL4  
9450-SGSTL4I  
9450-SGSTL7  
9450-SGSTL7I  
9450-SRTIETOP  
9450-SRTIEUNIV  
9450-TIEBAK2

4' Steel Horizontal Beam Post System

4' Steel Horizontal Beam Post System Intermediate

7' Steel Horizontal Beam Post System

7' Steel Horizontal Beam Post System Intermediate

Upper Post Tieback Cable Assembly

Universal Steel Cable Post Tieback

Lower Post Tieback cable Assembly

## Escape-Rite

### Emergency Escape & Controlled Descent Device

The Escape-Rite is a compact, lightweight industrial descent device that can be used for emergency egress. The Escape-Rite lowers the user to safety at a controlled rate of descent. It self-adjusts for each person's weight, operating by gravity and uses no electricity or power. The U.S. Navy utilizes this device because of its smooth, dependable rate of descent and ease of operation. There are no adjustments or special skills needed to operate the Escape-Rite. Each unit comes complete with an installation carabiner, two escape belts and a cable storage reel. Its weather resistant Poly-steel cable passes the test of time. When your life is on the line, depend on Escape-Rite.

- Lightweight and compact
- Does not require electrical power or special operator training
- Cable lengths from 10 ft. To 300 ft.
- Weather resistant Poly-steel cable has an inner core of high strength steel, jacketed by a chemical resistant polyester braid
- Separate serial number for each Escape-Rite, for tracking and record keeping
- 5 Year initial certification period
- Weather resistant container available
- Dust cover available
- UL Listed
- Rescue cradle kit available



1003-DEV



1000-CONTNR



1000-DC000

## Escape-Rite Controlled Descent

Meets the NIOSH criteria for Emergency Egress

### Emergency Descent Systems

1003 Escape-Rite Descent Rate approx. 3' per second, Poly-steel Cable  
*Maximum working load of 400 lbs.*

1003-DEV010	10' unit w/ 9111-A carabiner & 2 escape belts
1003-DEV020	20' unit w/ 9111-A carabiner & 2 escape belts
1003-DEV030	30' unit w/ 9111-A carabiner & 2 escape belts
1003-DEV040	40' unit w/ 9111-A carabiner & 2 escape belts
1003-DEV050	50' unit w/ 9111-A carabiner & 2 escape belts
1003-DEV060	60' unit w/ 9111-A carabiner & 2 escape belts
1003-DEV070	70' unit w/ 9111-A carabiner & 2 escape belts
1003-DEV080	80' unit w/ 9111-A carabiner & 2 escape belts
1003-DEV090	90' unit w/ 9111-A carabiner & 2 escape belts
1003-DEV100	100' unit w/ 9111-A carabiner & 2 escape belts
1003-DEV110	110' unit w/ 9111-A carabiner & 2 escape belts
1003-DEV120	120' unit w/ 9111-A carabiner & 2 escape belts
1003-DEV130	130' unit w/ 9111-A carabiner & 2 escape belts
1003-DEV140	140' unit w/ 9111-A carabiner & 2 escape belts
1003-DEV150	150' unit w/ 9111-A carabiner & 2 escape belts
1003-DEV160	160' unit w/ 9111-A carabiner & 2 escape belts
1003-DEV170	170' unit w/ 9111-A carabiner & 2 escape belts
1003-DEV175	175' unit w/ 9111-A carabiner & 2 escape belts
1003-DEV200	200' unit w/ 9111-A carabiner & 2 escape belts
1003-DEV250	250' unit w/ 9111-A carabiner & 2 escape belts
1003-DEV300	300' unit w/ 9111-A carabiner & 2 escape belts

1006 Escape-Rite Descent Rate approx. 6' per second, Poly-steel Cable  
*Maximum working load of 400 lbs.*

1006-DEV010	10' unit w/ 9111-A carabiner & 2 escape belts
1006-DEV020	20' unit w/ 9111-A carabiner & 2 escape belts
1006-DEV030	30' unit w/ 9111-A carabiner & 2 escape belts
1006-DEV040	40' unit w/ 9111-A carabiner & 2 escape belts
1006-DEV050	50' unit w/ 9111-A carabiner & 2 escape belts
1006-DEV060	60' unit w/ 9111-A carabiner & 2 escape belts
1006-DEV070	70' unit w/ 9111-A carabiner & 2 escape belts
1006-DEV080	80' unit w/ 9111-A carabiner & 2 escape belts
1006-DEV090	90' unit w/ 9111-A carabiner & 2 escape belts
1006-DEV100	100' unit w/ 9111-A carabiner & 2 escape belts
1006-DEV110	110' unit w/ 9111-A carabiner & 2 escape belts
1006-DEV120	120' unit w/ 9111-A carabiner & 2 escape belts
1006-DEV130	130' unit w/ 9111-A carabiner & 2 escape belts
1006-DEV140	140' unit w/ 9111-A carabiner & 2 escape belts
1006-DEV150	150' unit w/ 9111-A carabiner & 2 escape belts
1006-DEV160	160' unit w/ 9111-A carabiner & 2 escape belts
1006-DEV170	170' unit w/ 9111-A carabiner & 2 escape belts
1006-DEV175	175' unit w/ 9111-A carabiner & 2 escape belts
1006-DEV200	200' unit w/ 9111-A carabiner & 2 escape belts
1006-DEV250	250' unit w/ 9111-A carabiner & 2 escape belts
1006-DEV300	300' unit w/ 9111-A carabiner & 2 escape belts

### Emergency Descent Accessories

1000-CBLREL7	7" Replacement Cable Storage Reel
1000-CBLREL9	9" Replacement Cable Storage Reel
1000-CONTNR	Complete Weather Resistant ABS Container w/ Sealed Door & Internal Cable Reel
1000-CONTNRA	Complete Weather Resistant ABS Container w/ Sealed Door
1000-DC000	Escape-Rite Dust Cover
1000-RSCRDL	Adult Rescue Cradle Kit w/ Carabiner/ 100' Tagline Totebag

## SKYANCHOR™

The work station fall protection that moves with the worker

The SkyAnchor provides true 3-D movement and 100% fall protection. It reduces the danger of a swinging collision, because the anchorage point follows overhead. The beam design provides a rigid system with no sag. It is ideal for all types of elevated workstations. The SkyAnchor is available in crane, truss and floor mount. The unique enclosed rail beam design inhibits contamination of trolleys. The beams are made of a lightweight aluminum alloy.

Due to technical variations of each application, each system is engineered for the application for which it will be used. Please contact RTC Technical Sales for a fall protection representative near you.

- Provides solid anchorage point
- Combines RTC state-of-the-art fall protection technology with advanced overhead material handling technology
- Anchorage point moves effortlessly forward, backward and sideways
- Overhead anchorage reduces the potential of injury due to swing
- Enclosed rail design inhibits contamination of trolleys normally associated with exposed beams
- Available in free-standing models or ceiling mounted
- SkyAnchor monorail also available
- Multiple workers can use the same system
- Meets OSHA 1926.500 1910.66, ANSI Z359.1 and A10.14 standards



Enclosed rail design



Self-Retracting Lanyards